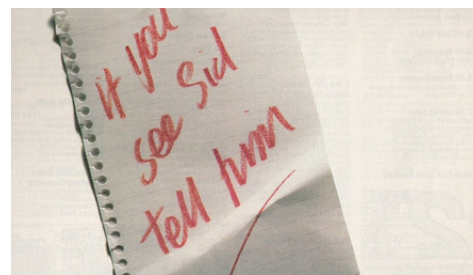
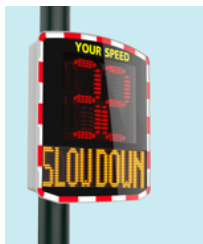




Out and About In Thwaites - October 22 - Issue No 458

" Tell SiD"



This Month -
Out and
About:

Tell Sid

Thank you -
Fashion show

News
@Thwaites
Village Hall

News from
The Hill

Play Group
Update

Spoofing

Green Matters

Cumbria Plan
Bee

Your Hidden
Gems

Transport and
Delight

Wildlife of
Morecambe
Bay

Back in 1986 at the start of a privatisation programme, a famous promotional campaign "Tell Sid" for British Gas Shares was launched by HMG. It was supported by the famous slogan "If you see Sid ... Tell him"

Today SID has arrived in our community - **Speed Indicator Device** which has recently been installed by CCC Highways on the road entering the Green from Millom.

The Parish Council has sought funding from the Ghyll Scaur Quarry Road Fund to support this new speed safety measure to help to reduce speeding through our communities. This was one of the "asks" stated in the local Community Plan.

There are three other poles located on the A5093 which can host the new device to allow for the rotation of SID.

*Thank
you!*

**Thwaites W. I. would like
to thank everyone who
purchased a ticket and
joined us at our fashion
show on 20th September.
We raised an amazing
£750 for Haverigg Inshore
Rescue.**

News @Thwaites Village Hall

Thwaites Village Hall 100 Club Winners - Sept 22

1st No 67 Sandra Kruger £30.00
2nd No 91 Alan Walker £15.00
3rd No 37 Mark Kitchingman £10.00
4th No 58 Scott Barker £10.00

Playing Fields

We have had to remove rope swings from the trees near the Play Park, which presents a number of safety issues, particularly for the younger children who may be tempted to use these type of swings. We look forward to your support in keeping the play park a safe place for all.



Community Lunch @ Thwaites Village Hall

Soup & dessert, £5 per head.

Arrive for 12 noon.

Anyone willing to help for a couple hours once a month, please contact Jan Procter on 774234.

Please note the next event is on 26th October 22



The new Thwaites Village Hall Logo has just been launched - this will help promote the Hall's identity particularly on social media as we seek to improve the Halls Bookings.

MONDAY

TODDLERS GROUP from 10 to 12

BOWLING from 1.30 to 3.30pm

SCOUTS from 7pm

Tues 18th Oct

WI

WEDNESDAY 26th Oct
COMMUNITY LUNCH - from 12 to 1.30pm

WEDNESDAY and THURSDAY evenings

TABLE TENNIS is from 6 to 7.30pm
Cost is £2 per person and all are welcome

FRIDAYS

FLOW returns to Thwaites Village Hall
and is from 9.30 to 10.30 am

FRIDAY 7th, 21st, 28th
BAT & CHAT

Table Tennis for Girls & Women

SUNDAY

League practice from 6pm until 7pm

Key Dates
For Your Diary!



News From The Hill

The results of the September 100 Club Draw

1st Prize £50.00 No 122 Guy Gibson
2nd Prize £20.00 No 3 Julia Aspinall
3rd Prize £20.00 No 27 Nathan Dodd
4th Prize £20.00 No 20 John Cooper
5th Prize £10.00 No 85 Jacqueline Sharpe
6th Prize £10.00 No 8 Maxie Roberts
7th Prize £10.00 No 11 Peter Bower

Annual AGM -Tuesday Tuesday 11th Oc 6.30pm

Come and have your say and find out what's been happening in the last 12 months.

Refreshments will be served at the conclusion of the meeting.

Monthly Open House

Saturday 1st October 5.30-7.30

Bring your own drinks. Nibbles will be provided.

Arts out West - Steve Bonham and The Long Road (folk music)

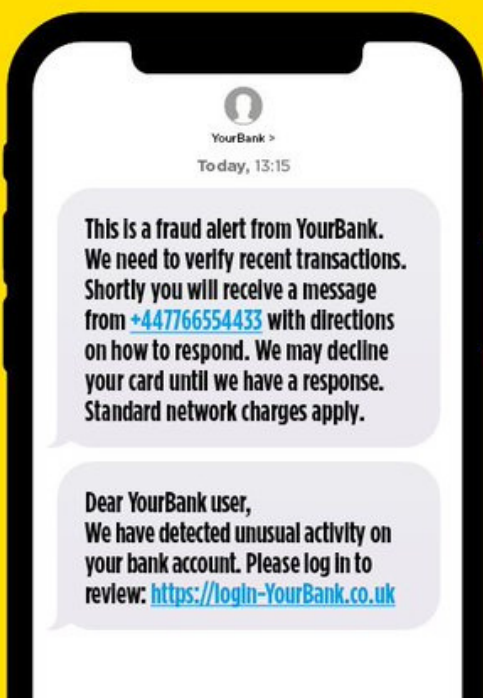
Bring your own drinks and nibbles.

Tickets: Adults £10, Children £5 and family £22

Please call Rebecca on 07494933025 to book.

Play Group Update

Playgroup has resumed at Thwaites Village Hall on Mondays from 10:00 to 12:00. An exciting array of toys and equipment are available for preschool children (and their adults) and we are planning craft activities too. The fee is £2.00 for an adult and child (50p for additional child or adult) and includes a snack, drink of cups of tea and coffee for adults too. Please do join us! For more information contact oandacontact@gmail.com



Criminals use a technique called “spoofing” to make it look like you are being contacted by a trusted organisation. These scam texts can often appear in genuine message threads making them difficult to spot.

STOP. CHALLENGE. PROTECT.

takefive-stopfraud.org.uk



TO STOP FRAUD™

Green Matters.....

Sowing of the wildflower meadow at Thwaites Village Hall

The strip of field adjacent to the tennis court has been prepared for eventual transformation into a wildflower corridor for pollinators. The turf was removed in August and the area has had weeds removed and the soil prepared for sowing. Sowing of seeds is due to start and be completed this month. While the meadow corridor establishes please keep clear of the area to avoid harm to the emerging seedlings

Five simple changes you can make to help protect the environment

Here are some simple swaps which can make a difference to the environment this Autumn:

1. **Wat-er waste!** A running tap wastes about six litres a minute – turning off the tap while brushing your teeth can save around 8,000 litres of water a year. Not only does this small change reduce your water bill but reduces your impact on the planet.
2. **Don't idle your engine.** Idling is a significant contributor to local air pollution. A car idling for 1 minute can fill up to 150 balloons with harmful exhaust emissions. Start switching your engine off when waiting at traffic lights.
3. **Wheel your way to a smaller carbon footprint.** A switch of one journey per day from car to bicycle reduces a person's carbon footprint by approximately 0.5 tonnes over a year.
4. **Can you help?** Did you know that in the UK only 72% of cans are recycled? Always put cans in the right recycling container. Metals are an incredible resource that should always be recycled.
5. **What a turn off!** The average UK home spends a whopping £80 a year on appliances left on standby and overcharging devices. Switching off devices not in use will not only save you money but help save the planet too.

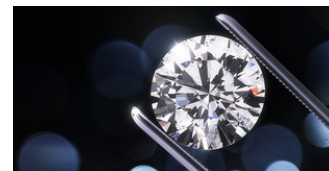


A new PLAN BEE to help Cumbria's vitally important native pollinators is being developed under the 'Planting for Pollinators Project'. As part of the development of the Plan we want to identify a suite of achievable actions which between us we can then make happen. We want to find ways/opportunities to enable everyone to take some action (however small) and every available piece of land to work better for pollinators. Our native pollinators are an incredibly important part of our natural ecosystems, so by helping these small insects we will be helping to support the development of our Nature Recovery Network, as well as helping to secure our own food production.

Now is your opportunity to put forward ideas as to how pollinators can be helped in your community, your workplace or Cumbria in general. We are very keen to get your ideas as to how we can improve things for our pollinators and what you see as the priorities. Please complete the short questionnaire so that we can bring your ideas into play: https://www.cbdc.org.uk/about-us/projects/cumbria_plan_bee/

Closing date for this consultation is 17th October 2022.

Your Hidden Gems



Cumbria is one of 22 areas to secure funding from the Department for Levelling Up, Housing and Communities for its Local Heritage Listing campaign. This campaign, designed to help protect the 'commonplace or everyday' heritage assets that are valued by people locally, but don't have any existing protection in their own right under planning law is underway now.

As part of this a new Local Heritage List is to be compiled and anyone can help protect and celebrate a wide range of heritage features - such as buildings and structures, archaeological features, field boundaries, parks, gardens, historic street furniture, signs, fountains and so on-by nominating them for inclusion. The Parish Council has started this process (see draft list below) and all comments, suggestions, and contributions are encouraged and welcomed! (Please send to oanda@gmail.com).

All nominations will be considered by a panel made up of council and voluntary heritage group representatives from across Cumbria who will meet every several months to review submissions. All successful sites will be added to the Local Heritage List which will be available to search online.

The following details are required for Local heritage listing:

- Site/feature name
- Description
- Photo
- Period (prehistoric, roman, early medieval (410 to 1066), medieval (1066 to 1540), poste medieval (1541 to 1900), Modern (post 1900), unknown
- Survival and authenticity
- Historic and archeological interest (important aspect of local, social, cultural, political, economic, religious history; associated w famous person or event, appears in historic maps, documents, images; demonstrates local practices and way of life; site could be used to tell story of local area)
- Architectural and design merit
- Part of a group of assets?
- Current use

Some examples of heritage features that could be considered include:

- **Stepping stones across Black Beck at Beck Bank farm**
- **Arnaby Lime Kiln**
- **Thwaites school**
- **Graveyard across from St Anne's and at St Anne's**
- **Reading room at Thwaites Village Hall**
- **Hallthwaites woolen mill buildings**
- **Duddon Estuary crossing**

Sites which are already on the 'Listed Buildings' list or are Scheduled Ancient Monuments can't also be added to the local list. For Millom Without these include:

- **Broadgate**
- **St Anne's church**
- **Duddon Bridge**
- **Rawfold Bridge**
- **Duddon Iron works buildings and leat**
- **Thwaites mill**

Transport and Delight - Article By Jonathan Powell

There is endless argument over which is the best or most beautiful railway station. It is the stuff of the colour supplements. Our own Green Road Station might rate as one of the most beautifully located. Situated in an enormous, protected landscape with views to Coniston Old Man, wistful to the departing traveller, and the most complete panorama of the Central Fells. "Beneath an ampler sky" that Wordsworth built up to in his 32nd Duddon Sonnet. There may be serious rivals for that badge. But we can be more certain that we have the best railway station bike shed.

Our concrete and corrugated iron shed has been there for many years and things have improved around it. New lights. CCTV. Real time train info and a digital ticket machine. A working telephone. The fine work of Peter Chesher, MBE has been continued by Turning Point who have decorated the bike shed with murals of sun and moon rise; both features of this location; and stunning if you are there at the right time.

The finishing touch has been the installation this month of "Sheffield" bike stands so that cycles and other things can be securely locked under cover in the shed.

Northern Trains' Community and Sustainability Manager, Martin Keating and the Station Manager were approached by the Parish Council and have made this sensible improvement. It is simple, sensible improvements like these which make sustainable travel practical ... and a pleasure.





Cumbria
Wildlife Trust

Cumbria Wildlife Trust

DUDDON SUPPORT GROUP

Thwaites Village Hall, The Green LA18 5HJ

WILDLIFE OF MORECAMBE BAY

Friday 14 October, 7.30 – 9.00pm

Expect top-quality photos of birds and other wildlife, along with informative commentary, from award-winning photographer and wildlife enthusiast, David Poole.

Admission: £3 suggested donation including tea/coffee and biscuits

Members and non-members welcome



Cumbria
Wildlife Trust