

# MILLOM WITHOUT PARISH COUNCIL

ANNUAL REPORT  
FOR FY 2021/22  
PREPARED BY DAVID SAVAGE,  
CHAIR - MWPC

---



## Millom Without Parish Council

Connecting Our Communities



**The Play Park is formally opened - September 21**



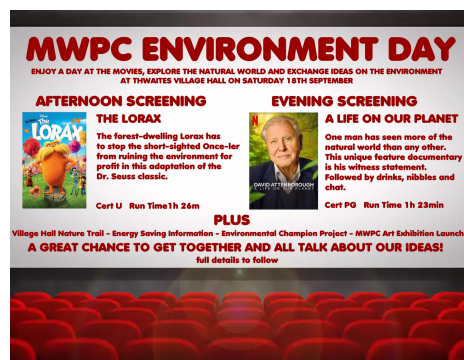
# LET THE IMAGES TELL THE STORY.....



Upgrading of Middle Cut - delivery of a community plan commitment.



**These pictures are just a sample of the busy Parish Council year in continuing with our Community Plan and seeking a wider engagement on key issues such as the Environment, Safer Cycling and working to maintain and promote our local heritage assets**





# KEEPING FOCUSSED ON PARISH COUNCIL BUSINESS

## Enhanced Website and Social Media Presence - supporting better communications

Building on last year's developments with our new website and Facebook page, we have aimed to keep local residents up to date with local issues and potential changes on the horizon which may impact our Parish. The Parish Council also play an active role in supporting the local magazine – Out and About.

facebook

**Responded to Major Consultations** – The Parish Council has ensured a response to two significant consultations which may impact our Communities:

- **Local Government Re-Organisation with regards to Unitary Council (s)**
- **Copeland Borough Council Local Plan**



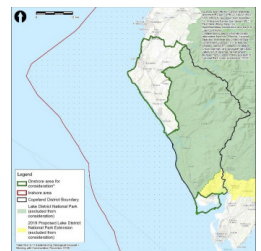
**Supported / Operated Community Trust Funds** – CGP and Ghyll Scaur Quarry – both Funds have supported big community projects like the Play Park and invested funds in our Village Halls.



**Active Members of Local Partnership / Organisations** – The Parish Council nominates Councillors to be members of **8 local groups**, to ensure our local voice is heard in these partnerships / organisations.



**South Copeland Community Partnership (GDF)** – In January 22, the Parish Council took the difficult decision to join the Partnership, with MWPC taking up a voting seat on this Partnership. The work of the partnership is evolving as the scope of the work is developed and better understood. The Parish Council will continue to feedback on key developments to the community.



**And Finally - a big thanks** to all the Parish Councillors who share their time, energy and skills for our Community. And behind the scenes – our Parish Clerk – Lesley Cooper who supports much of the Parish Council workload and this deserves a special note of thanks.